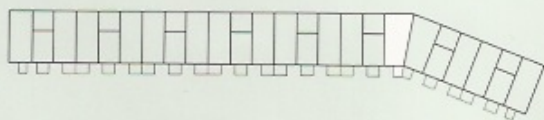


Der tages forbehold for mindre justeringer i lejlighedstypeme



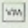


## Type CV



### Lejlighedsoplysninger

	brutto	netto
Boligareal	108	100 m <sup>2</sup>
Altan	7,9 m <sup>2</sup>	
Etage	St., 1. og 2. sal	
Antal værelser	3	
Antal lejligheder	3	

### Signaturforklaring

-  Komfur
-  Køle-fryseskab
-  Vaskemaskine
-  Håndvask
-  Brus